

Feeling cramped by traditional phaco systems?
We can expand your options.

Alcon®



Make every move easier

 **Laureate**[®]
WORLD PHACO SYSTEM



The LAUREATE® World Phaco System is a traditional phacoemulsification system designed for use in anterior segment procedures that require simultaneous lens extraction, irrigation, and aspiration, as well as associated procedures such as anterior vitrectomy and coagulation.

Finally, the freedom to make every move easier



Introducing the LAUREATE® World Phaco System. A higher level of traditional ultrasound is now within your reach.

At Alcon, customer satisfaction isn't just a promise. It's our mission. That's why we're committed to meeting your needs around the clock, around the world. Our commitment begins by providing you with world-class surgical products that lead the way in innovation and technology.

When you choose LAUREATE® from Alcon, you're investing in quality and reliability that will stand the test of time. The new LAUREATE® offers you the practicality of a table-top design with all critical functions seamlessly integrated into one easy-to-use console. LAUREATE® is simple to operate yet affords you unmatched versatility and control.

Here's how LAUREATE® is pushing the limits of traditional (longitudinal) ultrasound in cataract lens removal:

High-performance technology

- Advanced traditional ultrasound performance
 - INFINITI® Vision System U/S handpiece
 - NeoSoniX® handpiece
- State-of-the-art fluidics
- Non-invasive optical vacuum pressure sensor

Ease of use

- Ergonomically designed console
- Intuitive graphic user interface
- Compact and transportable

Optimized outcomes

- Designed to minimize surgical complications*
- Micro-Coaxial capabilities

Alcon

*Compared to Legacy® Occlusion Break Surge data.

 **Laureate**
WORLD PHACO SYSTEM

The right leap for you to make

The LAUREATE® World Phaco System redefines performance in the traditional ultrasound class by letting you experience cutting edge technology in a way that's functional and practical. Compare its performance to other phacoemulsification systems and you'll see that the LAUREATE® console has all the performance you need.

Phaco System Comparison		traditional ultrasound			
		INFINITI® Vision System	LAUREATE® World Phaco System	LEGACY® Phacoemulsifier System	UNIVERSAL II™ Phacoemulsifier System
Clinical Design	Console	Monolith	Tabletop with optional cart	Monolith	Tabletop
	Graphic User Interface	38.1 cm color touch-screen procedural-based	25.4 cm color touch-screen	25.4 cm color screen	Monochrome LED
Power Modalities	OZil® Torsional Handpiece	Yes	No	No	No
	AquaLase® Liquefaction Device	Yes	No	No	No
	NeoSoniX® Handpiece	Yes	Yes	Yes	No
	Traditional U/S Handpiece	INFINITI® Handpiece	INFINITI® Handpiece	LEGACY® 375 Handpiece	LEGACY® 375 Handpiece
Features	Vacuum Pressure Sensor	Mechanical	Optical	Flow through transducer	Flow through transducer
	Irrigation Pressure Sensor	Yes	No	No	No
	Dynamic Rise	Yes	No	No	No
	Micro-Coaxial Capable	Yes	Yes	No	No
	Wireless Remote	Yes	Yes	Yes	No
	Footswitch	Programmable 6-switch	Programmable 4-switch	Programmable 4-switch	ATFS, 4-switch
	Anterior Vitrector	Pneumatic	Electric	Pneumatic	Pneumatic

Dive into our unique system



Handpieces

The LAUREATE® World Phaco System provides two modes for cataract lens extraction:

- High performance INFINITI® U/S handpiece: 40 kHz, piezoelectric, slim, and lightweight
- INFINITI® NeoSoniX® handpiece combining the features of a phaco handpiece with sonic oscillations



INFINITI® U/S Handpiece



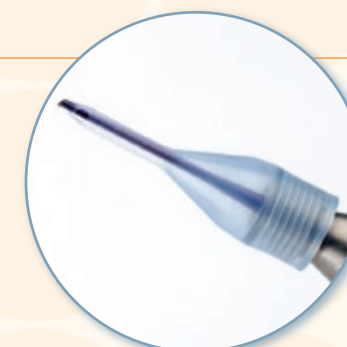
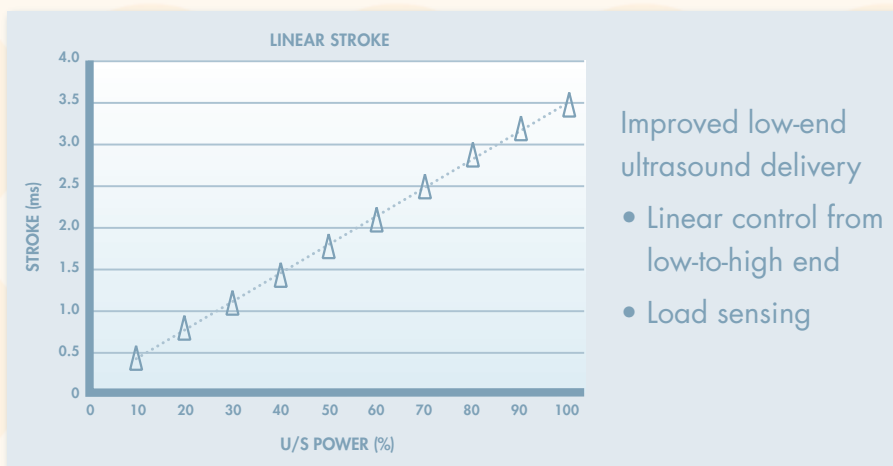
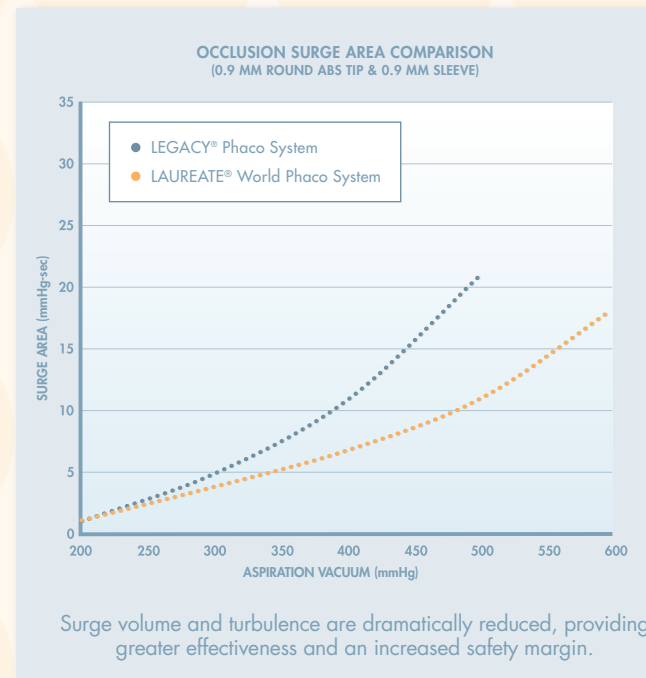
INFINITI® NeoSoniX® Handpiece

Fluidics



LAUREATE® fluidics are modeled on a cassette design utilizing proven, low-compliance membrane technology.

This fluidic design provides better chamber stability, surge suppression, and surgical response than high compliance tubing-based fluidic systems. The LAUREATE® System features a new, non-invasive optical vacuum pressure sensor which provides precise control of vacuum and venting.



Phaco Tips

Aiding in lens removal is our TurboSonics® family of phaco tips – a full line of phaco tip designs including KELMAN®, Aspiration Bypass (ABS®), flared, and tapered.



Add optimal functionality to your operating theatre

Mobile Cart allows ease of operation

Ergonomically designed, the LAUREATE® cart features an automatic IV pole programmed and controlled from the console, adjustable instrument tray, and storage bin for greater convenience and functionality in every surgical procedure.

Ergonomics

- Front panel connections
- Intuitive touch-screen
- Wireless remote
- One-touch cassette insertion
- Portable design
- Programmable foot switch



Anterior Vitrector Technology provides greater efficiency

The anterior vitrector features a reusable handpiece body with disposable tips. The electrically driven handpiece allows the LAUREATE® World Phaco System to be independent of an external gas source and also does not require an internal compressor. When balancing performance vs value for anterior segment vitrectomy, the LAUREATE® vitrector handpiece is an efficient, practical tool.

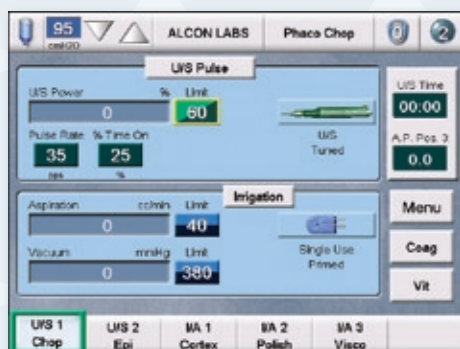
A simpler way to expand your world



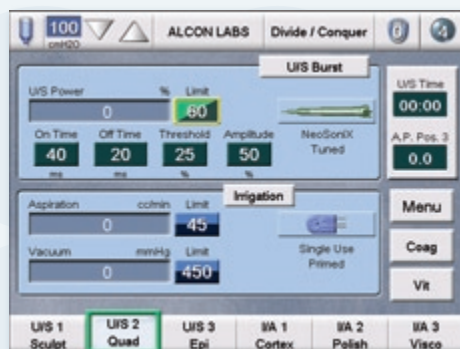
Total control of surgical parameters

Combining efficiency of design with an easy-to-understand user interface, the LAUREATE® software gives you precise control of ultrasound and parameters throughout the entire power range. The LAUREATE® displays personalized, preprogrammed surgical settings and permits intraoperative adjustments.

SURGERY SCREENS



Hyperpulse: greater, more predictable control over pulse frequency and duty cycle simultaneously manages “on” and “off-time” along with power for controlled delivery of energy.



Linear Burst: variable “off-time” and independent power delivery add new levels of control.

User-friendly graphic interface

The LAUREATE® World Phaco System graphic user interface is a simple, intuitive design that is straightforward and easy to use. Delivering a logical surgically-based interface, LAUREATE® is available in multiple languages to meet the basic needs of cataract surgeons throughout the world.

How it works

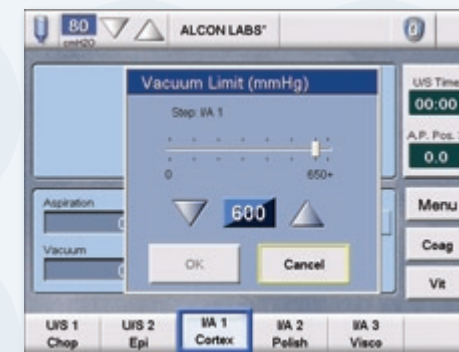
Graphic user interface (GUI) controls are based on pop-up menus which appear on the touch-screen of your console. The user can make adjustments or activate functions simply by pressing control buttons on the screen or via a footswitch or remote control. There are 3 types of touch-screen displays available for the procedure: set-up screens, surgery screens and dialog screens.

SET-UP SCREENS



Guide user through installation, priming, and testing of the fluidic system and handpieces.

DIALOG SCREENS



Allow user to view and modify system, doctor, and surgical settings.

Alcon service & support: The best place to land

Backing up every LAUREATE® World Phaco System is our global team of Alcon-trained service experts. They're available to provide prompt, knowledgeable, and reliable Technical Service support, from start-up through the life of your instrumentation.

It's that high level of responsiveness that's helped Alcon maintain its position as the most trusted name in surgical eye care. Let us show you how the global leader can help expand your options with the LAUREATE® World Phaco System.

Alcon



Alcon
www.laureateworldphaco.com

©2007 Alcon, Inc. 5/07 LRT005

Make every move easier

 **Laureate**
WORLD PHACO SYSTEM

LAUREATE® World Phaco System Product Specifications

This table is a quick reference point to identify basic system specifications, system requirements, and performance figures for the LAUREATE® World Phaco System.

CONSOLE

DIMENSIONS

Height: 24.1 cm (9.5 inches)
Width: 53.3 cm (21.0 inches)
Depth: 40.5 cm (16.0 inches)

WEIGHT

Unpacked: 17.3 kg (38 pounds)
Packed: ≈ 27.3 kg (≈ 60 pounds)

ENVIRONMENTAL LIMITATIONS

	Operating	Non-operating
Altitude:	3,048 meters (10,000 feet)	12,191 meters (40,000 feet)
Temperature:	10° C to 35° C (50° F to 95° F)	-40° C to 60° C (-40° F to 140° F)
Relative Humidity:	10% to 95% without condensation	10% to 95% without condensation

ELECTRICAL REQUIREMENTS

100 - 120 VAC, 50/60 Hz
220 - 240 VAC, 50/60 Hz

REMOTE CONTROL

Method: Infrared
Channels: 4
Batteries: AAA (3)

MAXIMUM INPUT CURRENT

6 A

PROTECTION AGAINST ELECTRIC SHOCK

Class I

CLASSIFICATION OF ALL APPLIED PARTS

Type BF

DATA CARD

MMC (MultiMedia Card), or
SD (Secure Digital) 32 Mb min

PERFORMANCE SPECIFICATIONS

PHACOEMULSIFICATION

Submodes: Pulse, Continuous, Burst
Tip Stroke @ 100%: $88.9 \pm 27.0 \mu\text{m}$ ($.0035 \pm .0005 \text{ in}$)
Resonant Frequency: $38.0 \pm 1.9 \text{ kHz}$
Pulse Rate Range: 0-100 pulse/second (depending on % Time On)
Burst Length: 5 to 500 ms
U/S Power: U/S power is defined as being proportional to ultrasound displacement of the phaco tip

ANTERIOR VITRECTOMY

Submodes: Cut I/A, I/A Cut
Cut Rate: 10 to 1500 cuts/minute

COAGULATION

10 Watts max, 75 ohm load
110 Vpp @ 1.5 MHz \pm 75 kHz, 75 ohm load
129 Vpp @ 1.5 MHz \pm 75 kHz, no load

VACUUM & ASPIRATION @ SEA LEVEL

Vacuum: 0 to 650 mmHg (0 to 86 kPa)
Aspiration: Up to 60 cc per minute (mL/minute)

POWER IV POLE ON MOBILE CART

Height Range: 30 to 102 cm

Alcon

 **Laureate**[®]
WORLD PHACO SYSTEM



Alcon

 **Laureate**[®]
WORLD PHACO SYSTEM