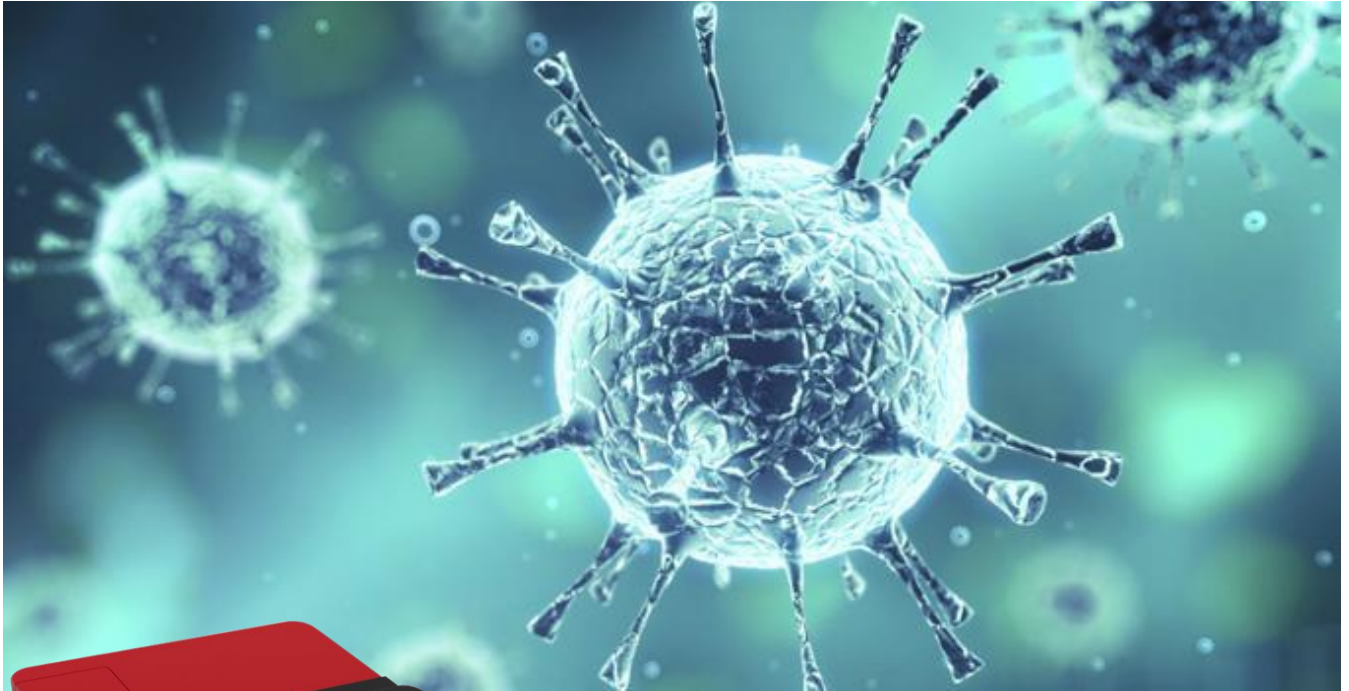


BioPlate Reader MR-850

Microplate Reader



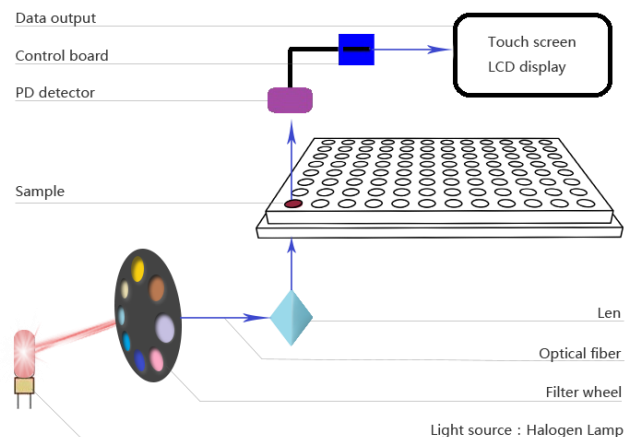
BioPlate Reader

BioPlate Reader MR-850 measures the absorbance with the intuitive touch screen. It provides reliable and qualified results by the high-quality photometer through the built-in powerful software. By the big 7" colorful touch screen, this system is expedient to users for simple operation. And the friendly visual users interface with the logical workflow ensure the excellent usability, making it ideal for qualitative and quantitative ELISA applications in the research laboratories.

Features:

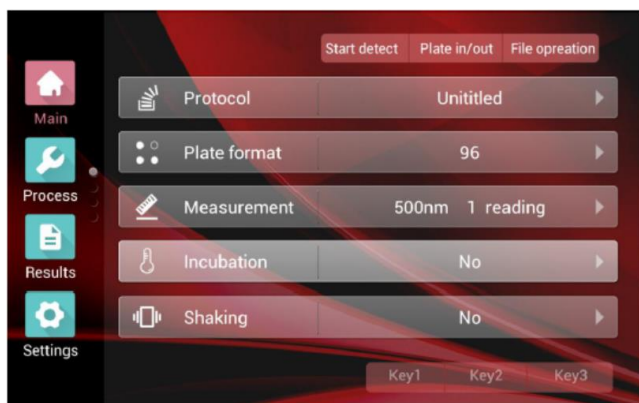
- Wide wavelength range of 340nm to 850nm
- Fast reading of both 96-well & 384-well microplates
- Shaking and incubation from RT+4°C to 50°C for temperature critical assays
- Big 7" colorful touch screen for intuitive operation
- Easy but powerful software with its logical workflow for universal usability
- High-quality photodetector from Hamamatsu
- USB port for easy data transfer

Working Principle



BioPlate Reader MR-850

Microplate Reader



Applications:

- Immunoassays (ELISA)
- Protein assays
- Endotoxins
- Cytotoxicity and proliferation assays
- Enzyme/Kinetic assays
- Growth curves

CE RoHS



Specification

Model	MR-850
Plate Type	96-well and 384-well plates, max height: 15.3mm
Light Source	Quartz-halogen lamp
Detector Type	Photodiode
Wavelength Selection	Filters
Wavelength Range	340nm to 850nm
Filters	8-position filter wheel; filter installed: 405nm, 450nm, 492nm, 595nm and 620nm
Linearity	0-3 Abs, $\pm 2\%$ at 405nm, 96-well plate
Read-out Range	0 to 6 Abs
Resolution	0.001 Abs
Accuracy	$\pm 1\%$ (0-3 Abs) or ± 0.003 Abs, whichever is greater at 405nm
Precision	$\leq 0.2\%$ (0.3-3 Abs) at 405nm
Shaking	Linear shaking with three modes: slow, medium and fast
Measurement Speed	7 seconds, 96-well plate, fast mode 13 seconds, 96-well plate, normal mode 13 seconds, 384-well plate, fast mode 34 seconds, 384-well plate, normal mode
Display	7" colorful touch screen
Interface	USB port for data transfer, USB port for printer
Size (L×W×H)	410×290×210mm
Power Supply	100-240V (50/60Hz)